

530

Sfera plastica con nottolino ottone.
Plastic ball with threaded brass part.



Articoli disponibili

530/2 Ø 90
Sfera plastica, filetto 1/4 W, piatta.

Available items

530/2 Ø 90
Plastic ball, 1/4 W thread, flat.

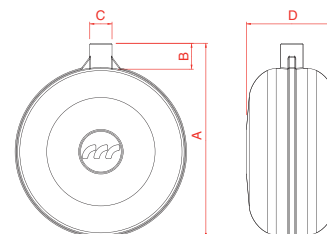
Informazioni tecniche

- Temperatura massima dell'acqua consigliata **80°C**.
- Materiali: **HDPE - CW614N UNI EN 12164**.

Technical informations

- Maximum recommended working temperature **80°C**.
- Materials: **HDPE - CW614N UNI EN 12164**.

Art.	Ø	mm				Filetto Thread		
		A	B	C	D			
530/2	90	100	10	11	52	1/4 W	X	800



531

Sfera plastica con nottolino ottone.
Plastic ball with threaded brass part.



Articoli disponibili

531/1 Ø 120 - 150
Sfera plastica, filetto 5/16 W.

Available items

531/1 Ø 120 - 150
Plastic ball, 5/16 W thread.

531/2 Ø 120
Sfera plastica, filetto 1/4 W.

531/2 Ø 120
Plastic ball, 1/4 W thread.

531/3 Ø 180 - 220
Sfera plastica, filetto 7/16 W.

531/3 Ø 180 - 220
Plastic ball, 7/16 W thread.

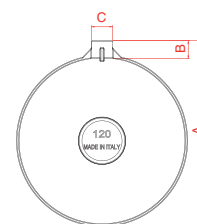
Informazioni tecniche

- Temperatura massima dell'acqua consigliata **80°C**.
- Materiali: **HDPE - CW614N UNI EN 12164**.

Technical informations

- Maximum recommended working temperature **80°C**.
- Materials: **HDPE - CW614N UNI EN 12164**.

Art.	Ø	mm			Filetto Thread		
		A	B	C			
531/1	120	130	14	16	5/16 W	X	200
531/1	150	168	18	16	5/16 W	X	100
531/2	120	130	14	14	1/4 W	X	200
531/3	180	210	30	20	7/16 W	X	50
531/3	220	250	30	20	7/16 W	X	30



532

Sfera plastica con scorrevole.
Plastic ball with sliding.



Articoli disponibili

532/1 Ø 120 - 150 - 180 - 220 - 300
Sfera plastica, vite in acciaio inox.

Available items

532/1 Ø 120 - 150 - 180 - 220 - 300
Plastic ball, stainless steel screw.

Informazioni tecniche

- Temperatura massima dell'acqua consigliata **80°C**.
- Materiali: **HDPE - AISI 304**.

Technical informations

- Maximum recommended working temperature **80°C**.
- Materials: **HDPE - AISI 304**.

Art.	Ø	mm						
		A	B	C	H	S		
532/1	120	155	25	15	15	3,5	X	200
532/1	150	170	25	15	16	4	X	100
532/1	180	210	35	15	18	4	X	50
532/1	220	245	55	15	20	5	X	30
532/1	300	350	45	15	20	5	X	10

